

REDEFINING TECHNOLOGY IN EVERY PIXEL



COMPANY PROFILE 2024



Leaders in LED Screens & Digital Displays

VuePix Infiled is the market leader in commercial LED displays & signage technology.

We offer an extensive range of high quality LED screens, LCD displays, customised digital visual solutions & advanced software systems, designed for your specific requirements.

Through our collaboration with leading architects, integration partners and industry experts, we deliver and implement cutting edge digital visual solutions, tailored to exceed your expectations.

Our Vision

To provide World-class digital display technology, transforming environments into interactive experiences, energising spaces and entertaining audiences.



Why Choose VuePix Infiled



Award Winning Technology

Our innovative technology and bespoke projects have been recognized and awarded by the leading industry experts. We pride ourselves in delivering cutting edge technology solutions for iconic projects across all market segments.



Precision Manufacturing

We manufacture at our own state of the art facilities and operate at the highest standards, meeting ISO19001 quality certification and ISO14001 environmental certification.



Full Product Customisation

We design and build custom made LED visual displays & systems to suit any space and application. Our teams help you to make a statement with your new digital display. The only limit is your imagination!



Vast Industry Experience

With our extensive industry experience of over 15 years, we have been involved in many iconic digital projects around the globe. Our technology excels at some of the most challenging environments.



Australian Owned

We are an Australian owned company with manufacturing facilities based in Shenzhen. All our products are designed and built to fully comply with the Australian & New Zealand standards.



Strong Global Presence

VuePix Infiled global support network spans all across the World, providing our clients and partners first class customer service and support in over 100 countries.



Local Teams of Experts

We have a network of dedicated professionals based in both Australia and New Zealand, supporting our clients, integrators, partners and projects locally.

LEASING NOW
CEBRE 1250.CO.NZ



QUEEN'S RISE

EST 1867



SWANSON

38



METRO
SUPERMARKET



DOM

Our Manufacturing Facilities

VuePix Infiled's dedication to the industry is reflected through our investment into research, technology, manufacturing, equipment, engineering, software and most importantly, our people. We manufacture at our own state of the art facilities in Shenzhen with over 130,000sqm of manufacturing area and a production capacity of over 12,000sqm of LED panels per month



130,000sqm
MANUFACTURING AREA



12,000sqm per month
LED SCREEN PRODUCED



200+
LED DISPLAY PATENTS



120 Billion
LED CHIPS USED



1,000+
STAFF MEMBERS

The Highest Standards

VuePix Infiled goes above and beyond to meet all required governmental policies worldwide, ensuring no matter where in the world we operate, it is of the highest standards.

Our operations meet ISO19001 Quality Management Certification, ISO14001 Environmental Certification and OHSAS18001 Occupational Health and Safety Certification.

Our stringent screening policy ensures all business partners we engage with operate within a common set of core values with regards to the environment and sustainable work practice.

VuePix Infiled understands the world for future generations should not be compromised by the actions we take today.



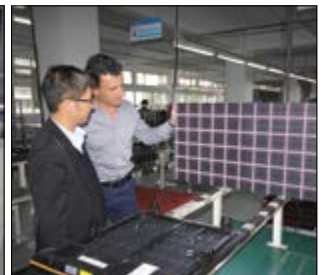
ISO9001
CERTIFIED



ISO14001
CERTIFIED



OHS18001
CERTIFIED





EXIT →

ITEMS MUST BE REMOVED
BEFORE RIDING

VuePix Infiled Has a Solution for Any Challenge

VuePix Infiled offers an extensive range of high quality LED screens, LCD displays, advanced software systems and customised digital visual solutions, designed for your specific requirements and built to exceed your expectations.

Our screens are tried and tested in almost every market and under almost every condition, from the top of high rise buildings, sports stadiums, billboards, shopfronts, concerts & stage shows, and everything in-between. Our digital displays can be found front and centre at the World's largest stages, at main international transportation hubs, shining bright at most of the major TV productions or delivering messages to millions throughout the series of digital billboards worldwide.

Comprehensive Range to Meet your Specific Requirements

We provide the ultimate technology solutions that are specifically designed and tailored to suit your environment.

With our extensive industry experience, we understand that each client may have different expectations when it comes to digital technology solutions. Every specific environment also comes with its own challenges and requirements, that are unique and important to consider in different stages of the project.

Working closely with leading architects, designers and AV integrators, our teams make sure your digital systems are fit for purpose and designed to deliver superb performance, great ROI and exceed your expectations.



**MADE
FOR
MORE**

Outstanding Service & Support

When supplying world class visual solutions, it is paramount to provide outstanding service and support to back it up.

VuePix Infiled has been built on the formation of successful relationships and our continued commitment to exceed our client's expectations is what sets us apart from the competition.

Our experienced teams together with our integration partners provide technical support throughout all stages of the process, from technology selection and customisation through to supply, installation and commissioning of your LED display project.

Together we continue providing support after the completion of the project to sustain maximum quality, performance and lifespan of the installed systems to ensure a great return on your investment. We offer and provide preventative maintenance programs and regular servicing tailored specifically for each project.



LOCAL TEAMS OF EXPERTS



GLOBAL SUPPORT NETWORK



EXPERT ADVICE THROUGHOUT ALL STAGES OF THE PROJECT



TAILORED MAINTENANCE PROGRAMS





Global Support Network

VuePix Infiled Global support network spans all across the World, providing our clients and partners with first class customer service and support in over 100 countries.

Local Teams of Experts

Our Australian & New Zealand Centres

QUEENSLAND

2 Inventory Court
Arundel QLD 4214

VICTORIA

204 Turner Street
Port Melbourne VIC 3207

NEW SOUTH WALES

2/40 Marigold Street
Revesby NSW 2212

SOUTH AUSTRALIA

10 William Street
Mile End South SA 5031

WESTERN AUSTRALIA

3 Michel Cres
Gosnells WA 6110

NEW ZEALAND

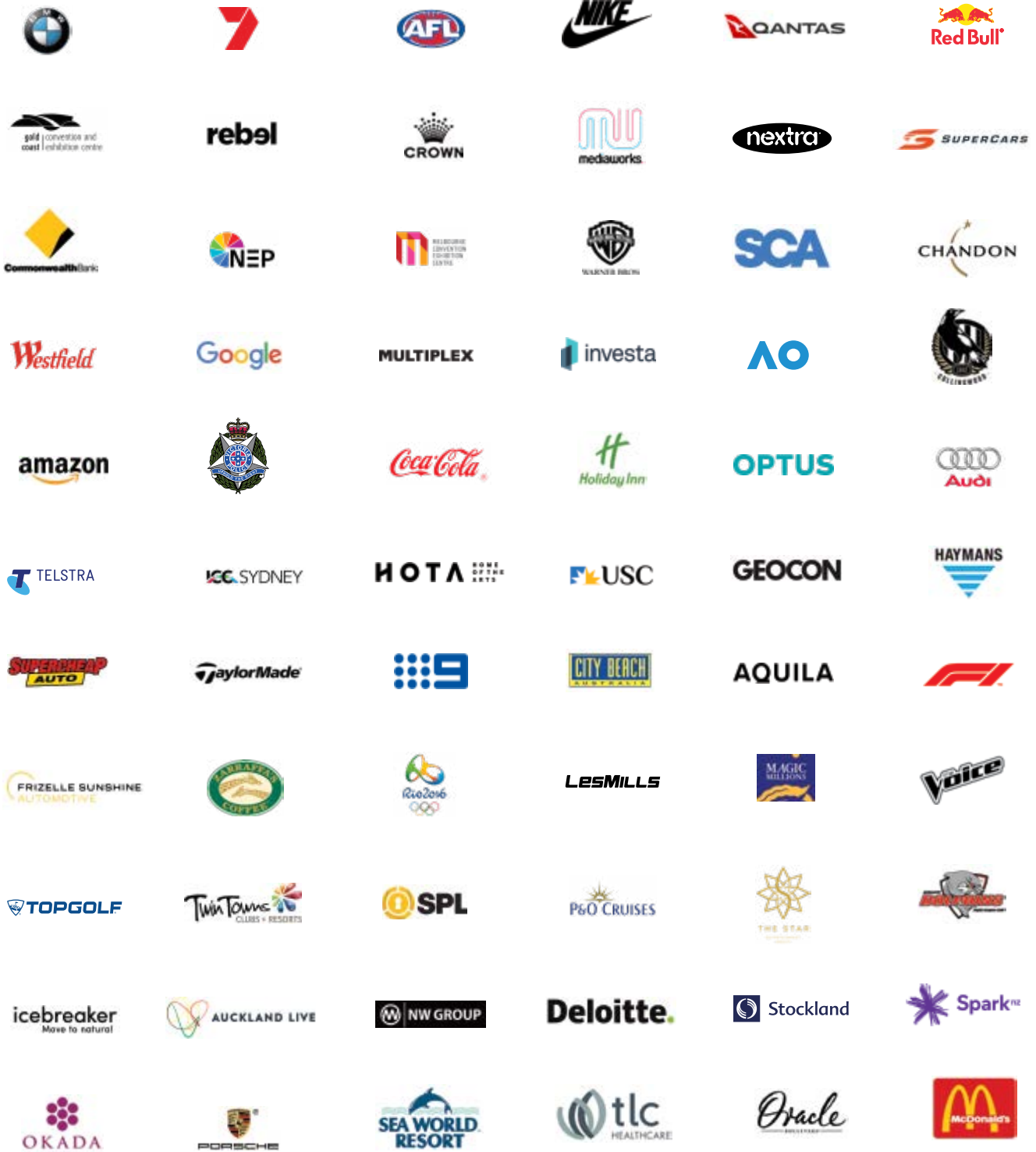
7A / 89 Ellice Road
Wairau Valley AUK 0629





Who Trusts in VuePix Infiled

Our reputation for professionalism and innovation has resulted in us working with some of the world's most influential companies and brands. We take great pride in forming and maintaining strong, successful relationships with every one of our valued clientele.



....and many more

**OUR FIELDS OF
EXPERTISE.**

Outdoor Digital Media

Our digital technology platforms make brands unmissable.

We provide high quality, purpose built, IP65 rated LED screens & LCD displays, designed specifically for permanent fixed outdoor installations, offering the best balance between weight and durability.

- Exceptionally high brightness
- Delivering excellent visuals in any light condition
- Built to withstand outdoor elements
- Advanced content management system
- Patented real-time monitoring system
- Reliable technology with great ROI
- Local service & support teams
- Tailored maintenance programs



Frizelle Sunshine Automotive Group | Zarraffa's Coffee HQ | Melbourne Convention & Exhibition Centre | Warner Bros. Movie World
Twin Towns Clubs & Resorts | The Oracle Boulevard | Queen's Rise | Mediaworks NZ | The Mark Retail Precinct | ASB Showgrounds
Supercheap Auto | Stocklands Green Hills | SPL Locksmith | Coogee Beach Digital Kiosks | 100 Parnell Road | Home of the Arts
Gold Coast Convention & Exhibition Centre ... and many more

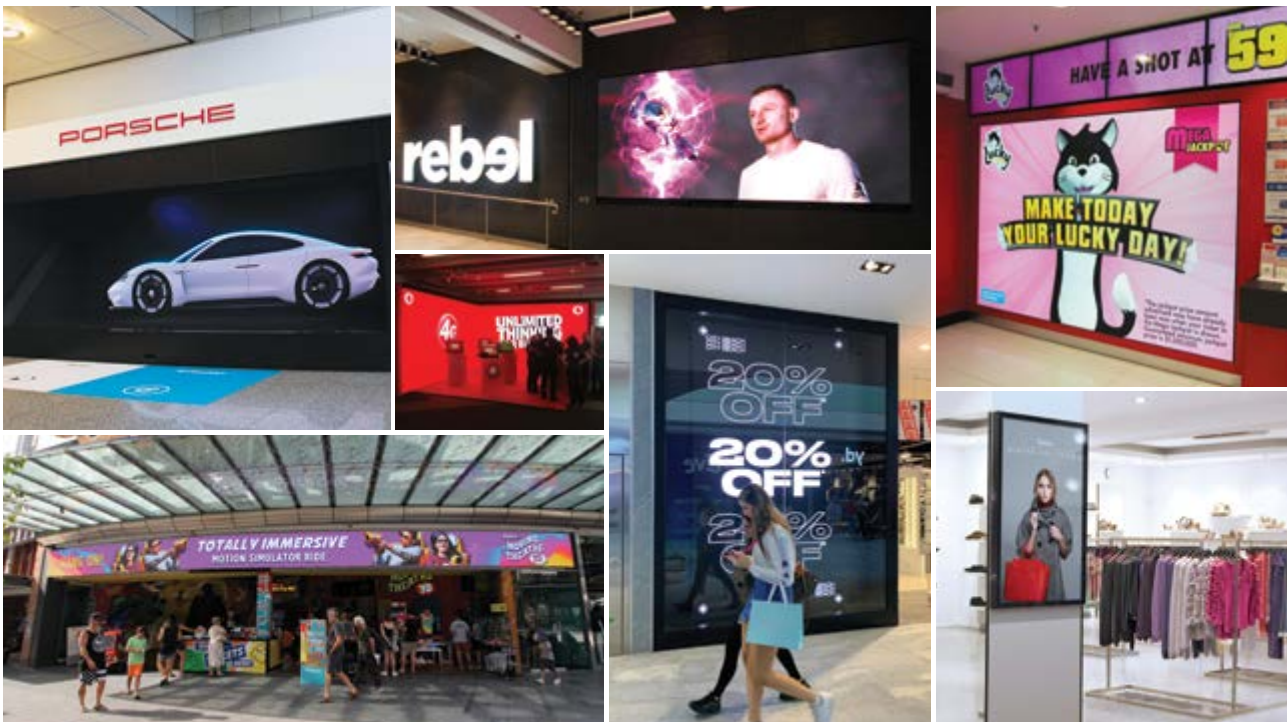
Retail Environments

Create a statement, attract attention, engage your customers!

Purposely designed for retail & commercial applications, our state-of-the-art seamless digital displays are perfectly suited to promote your business and to ensure prime viewing by your customers.

Our experienced teams work together with leading AV integrators in the retail sector, making sure each client receives the most reliable, cost-effective and complete digital display systems to fit their vision.

- Creative eye-catching digital displays
- Delivering vivid & dynamic content
- Designed to grab attention, engage & influence
- Highly customised solutions to fit your environment
- Flexible & user-friendly CMS
- Great ROI



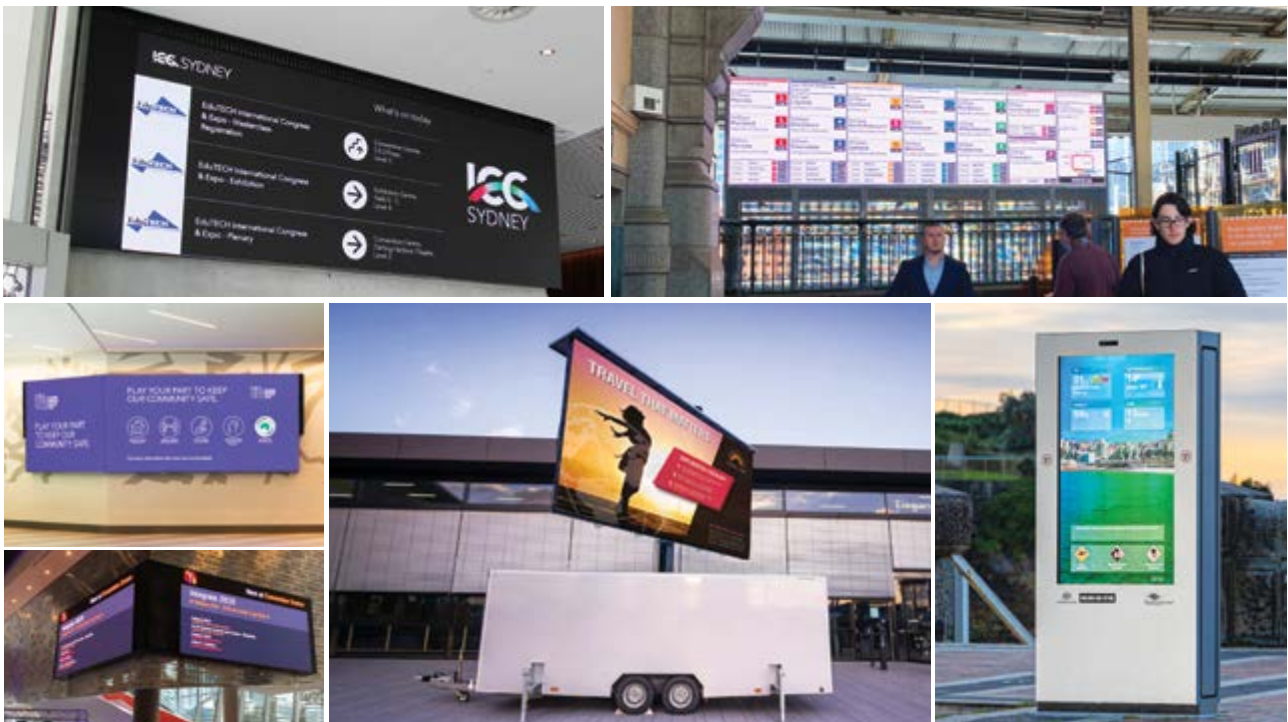
Rebel Sport | Ice Breaker | Louis Vuitton | Porsche | Red Bull | Duty Free Auckland Airport | Volkswagen AG | ISUZU | Coca-Cola
Topgolf | Telstra | Haymans Electrical | Aquila | Nextra | City Beach | Ripley's Believe it or Not! | Vodafone | Taylormade | Optus
... and many more

Digital Signage Systems

Ultimate technology solutions to help direct your patrons.

VuePix Infiled offers reliable digital signage systems which are visually stunning, easy to operate and tailored to suit your environment. Our qualified teams of technicians work closely with architects & AV integrators, making sure that our technology solutions comply with all the requirements and safety regulations specific to the location. This ensures that your message will be delivered clearly and efficiently.

- Tailored technology solutions to suit your environment
- Reliable systems with dual redundancy
- Remote content management & display monitoring
- Durable mobile platforms built to withstand frequent transport



ICC Sydney | Melbourne Convention & Exhibition Centre | Flinders Street Station | HOTA Cultural Precinct | Bristol Airport
Coogee Beach Digital Kiosks | Mediaworks NZ Digital Kiosks | Wellington International Airport ... and many more

Film, Broadcast & XR Production

We build LED screens that look great on camera.

We design and deliver state-of-the-art digital platforms which produce the ultimate image quality for the most demanding environments. Catering specifically for all fine pixel pitch applications in film, broadcast & virtual studio environments, our LED displays utilise the latest processing systems. Ultra-low SCAN rate ensures a superb performance for professional camera systems. High quality Macroblock driver ICs delivers an exceptional refresh rate. Utilising exclusive black LEDs, full black frame & ultra-black masking materials, our VuePix Infiled digital displays provide a new level of contrast, superior image quality and picture depth.

- *Designed specifically for film, broadcast & virtual studios*
- *Utilising the latest processing systems*
- *Ultra-low SCAN rate & exceptional refresh rate*
- *Reliable systems with dual power & signal redundancy*



Channel 9 Swimming Trials 2024 | Channel 7 Rio 2016 Olympic Studio | Brownlow Medal | The Voice | Big Brother | ARIA Awards
X Factor Australia | Scene Change Virtual Studios | NZ Video Music Awards | Samsung Galaxy Live | Moto Group Virtual Studio
Victoria Police Media Centre | Kōawa Creative Technology Precinct ... and many more

Sport, Stadium & Entertainment Precincts

Engage fans in a whole new game experience!

Harness the energy of the crowd and create an atmosphere that brings fans to their feet, Our teams of experts have delivered all sorts of advanced digital LED platforms for iconic stadiums, arenas & sporting facilities around the globe. Our digital technology allows you to surround your fans with constant simulation and create the ultimate thrilling environment. We work closely with venue management, technical staff & event organisers to design customised digital platforms, which are built to specific industry standards.

We supply Scoreboards, Video Walls, Perimeter Signage, Digital Information Systems and Digital Advertising Platforms for all kinds of different sports and environments:

-  **AFL / NRL**
-  **Cricket**
-  **Rugby**
-  **Fitness Centres**
-  **Tennis**
-  **Volleyball**
-  **Basketball**
-  **Yoga Studios**
-  **Hockey**
-  **Motor Sports**
-  **Netball**
-  **Spinning Studios**
-  **Soccer**
-  **Horse Racing**
-  **Golf**
-  **Boxing**



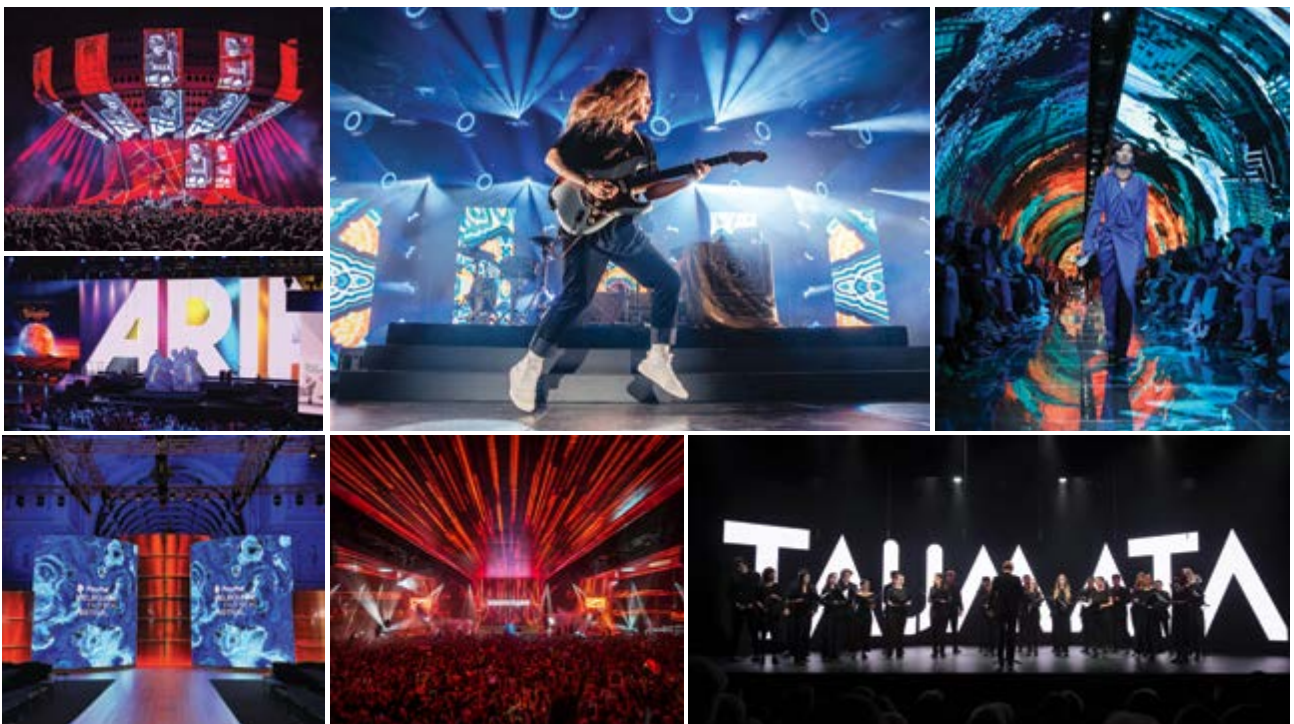
Redcliffe Dolphins Arena | O'Brien Icehouse | Lulea Ice Hockey Stadium | UEFA Euro 2016 Soccer Championship
Channel 9 Swimming Trials | 2024 Toowoomba Sports Ground | Elite Football Training Facilities | Rio 2016 Olympic Studio
Magic Millions | Topgolf Gold Coast | Etihad Stadium | Red Bull Cup | Australian Open | Formula 1 French Grand Prix
Esports Stadium Arlington | USC Netball Stadium AAMI Park Melbourne | Southport Sharks | West Coast Eagles ... and many more

Live Production

Our LED screens provide you with infinite creative possibilities for your stage.

We offer cutting-edge LED touring systems, featuring high-brightness LEDs, producing stunning visuals in any light conditions, even under the direct sun. The VuePix Infiled panels are remarkably strong and robust, but also extremely lightweight. The cabinets feature intuitive locking systems, ergonomic handles and other advanced features, which assist in rapid installation. Our advanced touring panels are equipped with an in-built angling system, allowing displays to be set up as flat or curved screens, convex or concave, in different angle options. Most of our systems offer both front and rear service and easy maintenance access.

We have a great understanding of the time restraints for installation and transportation of stage sets. We offer dedicated transportation systems to allow for easy transportation and to make the installation process super-efficient.



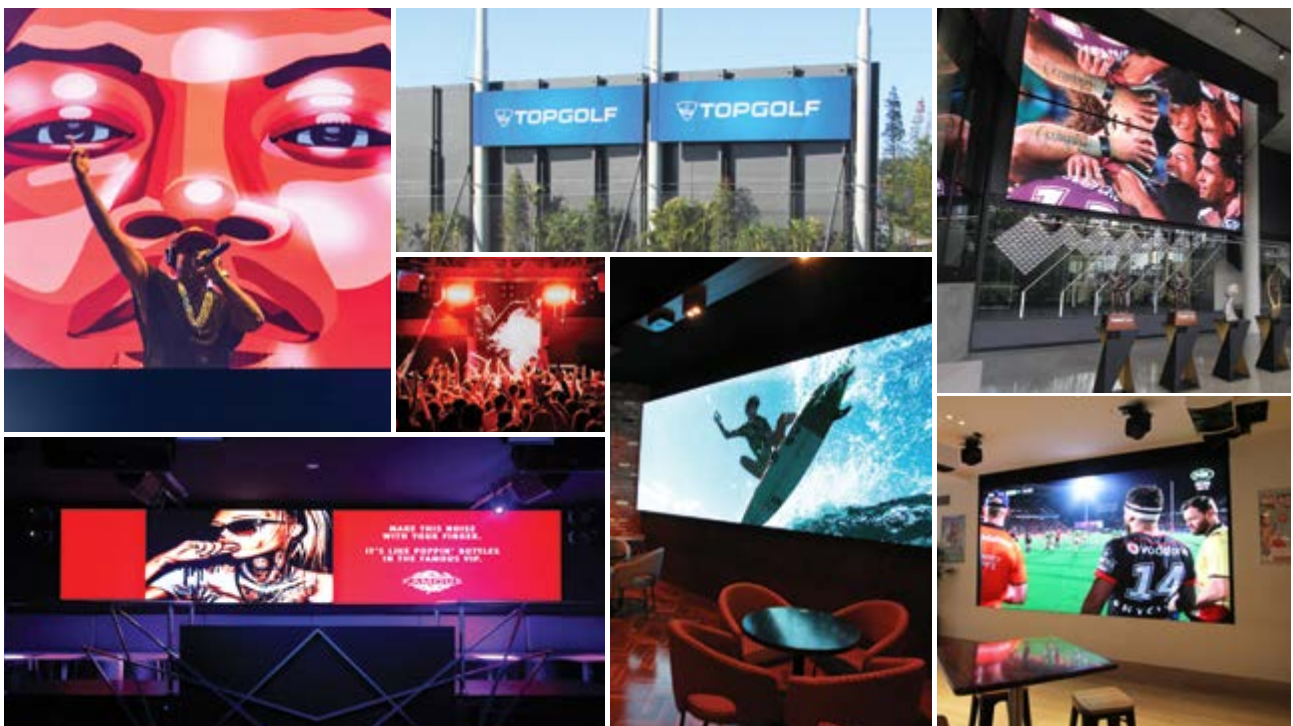
Tomorrowland | Red Bull Cup | Esports Arena | Tash Sultana Tour | Cisco Live | BMW Exhibition Hall | Spilt Milk | Keith Urban Tour
UEFA Euro Championship | David Guetta | State of Origin | Qantas Gala Ball | Justin Bieber | Paris Fashion Week | FashFest
Rihanna & Chris Brown Tour | Australian NFF Congress | Pope Francis Mass | Pink Floyd | Katy Perry Tour | V8 Supercars
Formula 1 French Grand Prix | Balenciaga Runway Show | Paul Van Dyk Reed Gift Fairs | Nando's National Conference
Migration Settlement Awards | Summer Session Festival | Guy Sebastian Tour | Prime Minister's Awards | Stereosonic
Future Music Festival | TAUMATA | Melbourne Fashion Festival and many more

Event & Hospitality Venues

Bring your venue to life with our engaging digital displays!

Our experienced teams have worked within high profile venues across the world, as well as with local business operators, creating customised LED displays, designed to immerse the guests in an atmosphere that is exciting and dynamic. We offer quality, reliability and a personal approach. We make sure our products are fit for purpose and designed to deliver a great performance to entertain your guests each and every time.

- *Multipurpose digital displays*
- *High level of customisation*
- *User-friendly content management system*
- *Local teams of experts for technical support*
- *Energy efficient & environmentally friendly*



Okada Integrated Resort | Cali Beach | Topgolf | Club Central Hurstville | Melbas on the Park | Holiday Inn | Famous Club
Twin Towns Clubs & Resorts | FCTN Club | The Rockhampton Leagues Club | Marquee - The Star | Southport Sharks
P&O Cruises Fleet | Brisbane Broncos Leagues Club | O'Brien Icehouse | 1st on Wharf Tavern | Redcliffe Leagues Club
Blacktown Workers Sports Club.. and many more

Convention & Exhibition Centres

Our digital technology platforms provide high flexibility for dynamic environments.

Our team has extensive experience in delivering high profile exhibitions, conferences, and signature events. Working together with leading convention & exhibition centres, we understand the importance of delivering the right technology solutions, that will allow you to deploy a variety of unique setups and different looks for each and every client.

By selecting our cutting-edge digital technology, paired with the latest processing systems, you are providing your team with highly flexible tools to stay ahead of the game, creating mind-blowing globally recognised events.



AOTEA Centre Auckland | ICC Sydney | Melbourne Convention & Exhibition Centre | Gold Coast Convention & Exhibition Centre
Auckland Live Digital Stage | Adelaide Convention Centre | Brisbane Convention & Exhibition Centre | Auckland Showgrounds
Brisbane Showgrounds | Gladstone Entertainment Convention Centre | Cairns Convention Centre ... and many more

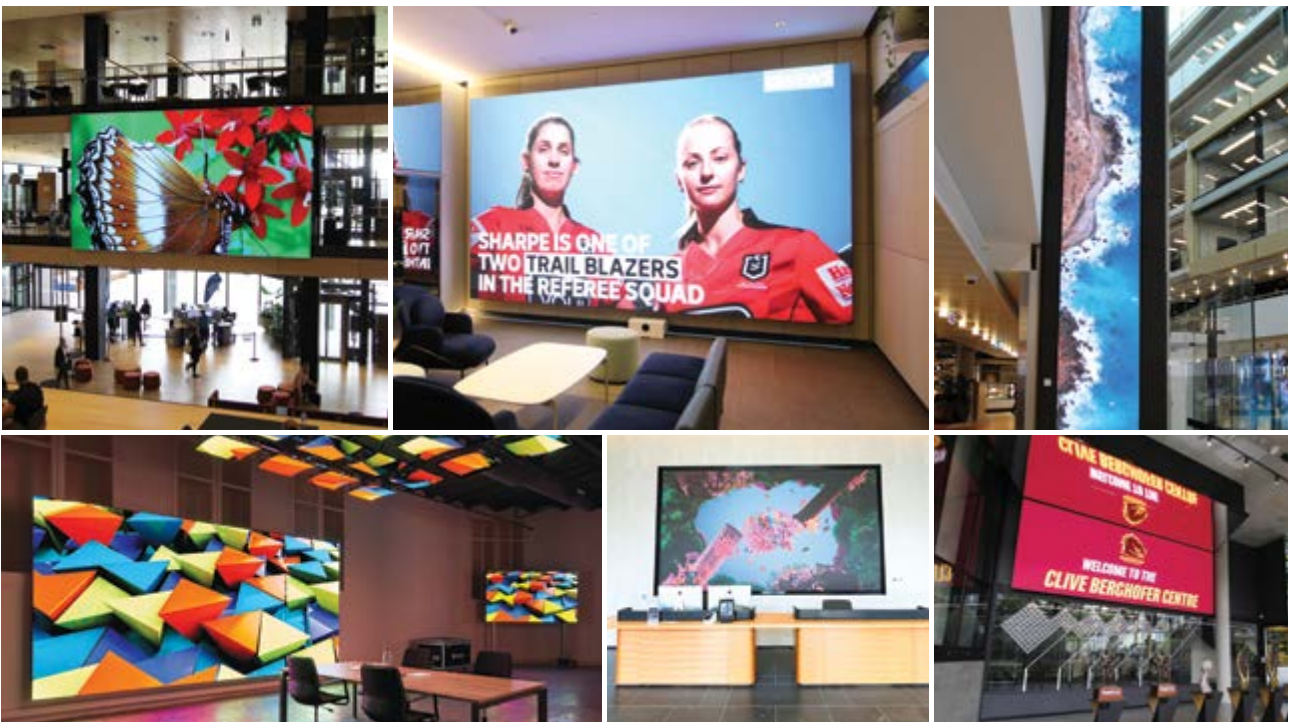
Corporate Environments

Turn your corporate environment into a place of creativity!

We work together with experienced AV integrators to deliver full turnkey digital display solutions. With the highest quality LED components that deliver superior image quality, our LED systems are ready to transform any surface into a striking digital canvas.

Our experienced teams will guide you throughout the whole process, helping you to select the best solution in accordance to your requirements and budgets. Our digital display systems are user-friendly, energy efficient, designed as plug-and-play, and will work with your preferred platform content management system.

- Full turnkey technology solutions
- Delivering superior visual performance
- Non-intrusive mounting systems
- High level of customisation
- Designed as plug-and-play
- Tailored SLA agreements



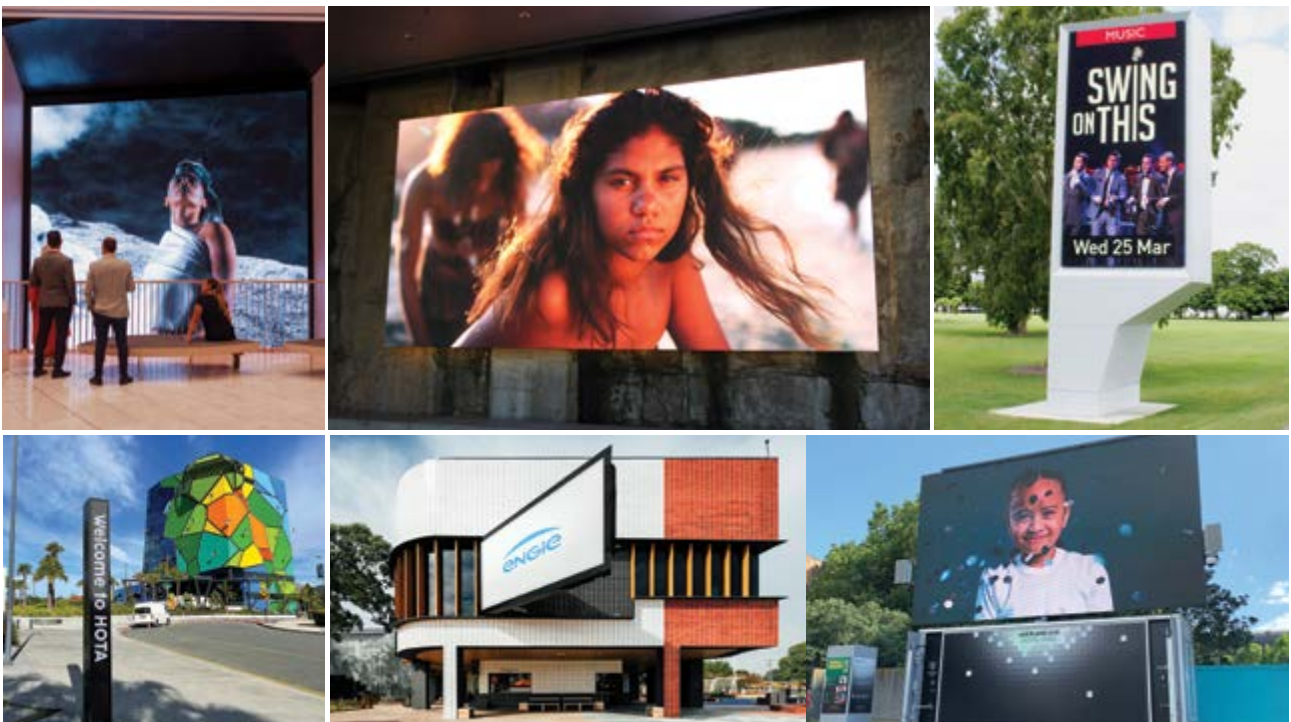
Investa Property Group | Commonwealth Bank HQ | 339 Coronation Drive | Broncos Leagues Club | Inglis Riverstage Stables
Les Mills HQ | Domaine Chandon | The Rise – USC | Holiday Inn | Victoria Police HQ | Geocon Property Developers | Volkswagen HQ
Facebook HQ | Spark HQ | QT Hotel Canberra | Jubilee Place ... and many more

Arts, Education & Community

Transform any space into a creative & engaging environment!

Our experienced teams work with leading designers, architects and AV integrators, together transforming classrooms, libraries, lecture halls, auditoriums, common areas and outdoor spaces into dynamic and inspiring interactive environments.

Offering a full range of innovative digital displays in any size, shape or curve to fit your space, both outdoor and indoor. We design and deliver LED systems which are lightweight, energy efficient, simple to install and easy to maintain and operate. Our advanced and user-friendly content management platforms allow information and imagery to be updated in real time. We work with you to incorporate the latest visual technology into your environment, making sure that our systems are fit for purpose and deliver the desired outcome, whether it is education, entertainment, information, or all of those at different times.



Barangaroo Reserve | AOTEA Centre | HOTA Cultural Precinct | Springvale Urban Screen | Glow Church | Geelong Arts Centre
Auckland Live Digital Stage | Tarneit Rise Primary School | USC Moreton Bay Campus | Metro Church | Emmaus College
Geelong Arts Centre | University of Canterbury... and many more

Creative Applications

Create a statement with our bespoke digital solutions!

Creating unique, bespoke LED solutions designed specifically for your application is one of the main features that sets VuePix Infiled apart from the rest. Our experienced teams work together with leading designers and engineers to specify, design and build your unique LED display, which will make a strong visual impact to the audience. From high transparency displays catering to outdoor media facades, designer displays of irregular shapes, soft flexible modules for creative installations, to interactive media displays with in-built motion sensors allowing responsive content to be shown. The latest LED technology we work with allows us to create ultra-slim and super light-weight displays, which can be seamlessly attached to any structure or surface, totally integrated with the building. Shining bright when powered on, yet very class and discreet when it needs to be.

We enjoy pushing the boundaries and redefining the possibilities of the digital landscape with our bespoke LED solutions. The only limit is your imagination!



Australian Open | Warner Bros. Movie World | CBA Headquarters | Paris Fashion Week | Foundry Tunnel | Lendlease
Big Brother Australia | OPTUS Store | Joker Face | Green Lantern | Sea World Resorts ... and many more



VUEPIX
INFILED

REDEFINING TECHNOLOGY IN EVERY PIXEL

Contact our VuePix Infiled experts to discuss your next project

Australia: 1800 883 749 New Zealand: 09 218 6532 International: +61 7 5509 4633

info@vuepix.com | vuepix.com