



**DIGITAL SIGNAGE**  
**POS SYSTEMS**

# DIGITAL SIGNAGE & POS SYSTEMS

VuePix Infiled is the market leader in Digital Signage Displays & Commercial Digital Technology.

We offer an extensive range of high quality LED displays, LCD kiosks, advanced software systems and customised digital visual solutions.

Purposely designed for retail & commercial applications, our state of the art, seamless digital displays are perfectly suited for installations in any location or application in prime viewing position of your customers or high density foot traffic, such as shopping malls, airports, corporate environments, traffic hubs, etc.

Our experienced team is constantly working to ensure each client receives the highest quality, most reliable, cost-effective and complete digital display systems to fit their vision.

VuePix Infiled enables you to customise digital display systems to your own specifications and requirements.

- ▶ Cutting edge technology
- ▶ Fully customised solutions
- ▶ Your choice of size, orientation & resolution
- ▶ Single or double-sided displays
- ▶ Purpose built for indoor or outdoor applications
- ▶ Bespoke mounting solutions or free standing displays
- ▶ Real time content management
- ▶ Custom exterior styling





Want to **drag** out  
your summer?

it's  
yours.

▶

tvnz  
OnDemand  
House of Drag

RMS

# LCD KIOSKS & SIGNAGE SYSTEMS

VuePix Infiled LCD displays offer a wide range of high resolution all in one digital signage solutions.

The sleek prefabricated enclosures are a perfect fit for any busy hubs where displaying high resolution information and crisp visuals is essential.

Our LCD displays offer exceptional versatility by incorporating screen sizes from 32" up to 85" with an ultra-high native resolution up to 4K.

All VuePix Infiled LCD units come standard with non-reflective glass, hard wearing, heat fused powder coated metal enclosures and in a wide range of colour finishes.

The displays are equipped with a light sensor that detects the ambient light to optimise screen brightness.

Built for 24/7 operation in areas exposed to impact from high density foot traffic, our LCD display systems provide exceptional reliability in an attractive form factor.

Thermally toughened glass protects the screens internal components and adds an extra layer of security against external elements. The advanced temperature management system regulates and protects the LCD screen within.

Each enclosure incorporates discrete hinged access for ease of service ensuring the most stringent uptime commitments can be achieved.

Camera systems can be fitted within the display for monitoring real time analytics.

**VuePix Infiled LCD displays can be custom designed to suit almost any specific technical or aesthetic requirements.**

- ▶ Display size 32" – 85"
- ▶ Ultra-high brightness
- ▶ Anti-reflective glass
- ▶ Built for 24/7 operation
- ▶ Single or double sided
- ▶ Freestanding, suspended or wall mounted
- ▶ Indoor or outdoor solutions
- ▶ Custom exterior styling



PEUGEOT  
SUMMER DRIVE

**5 YEAR** SERVICE + **5 YEAR** WARRANTY + **5 YEAR** ROADSIDE ASSIST

OFFER ENDS 31ST JANUARY\*

FROM **\$31,990** +ORC



  
PEUGEOT

\*Some conditions apply

**QMS**

# LCD SUSPENDED DISPLAYS

Single & Double Sided

 MU 131 KMG A1 MURKIN 8:10 TODAY 7:58 ARRIVE 	 EP 881 PTGAL KVAH SPKSA 8:28 TODAY 8:00 ARRIVE 	 VA 100 PTGAL KVAH SPKSA 8:30 TODAY 8:01 ARRIVE 	 WZ 124 PTGAL KVAH SPKSA 8:30 TODAY 8:04 ARRIVE 	 MU 733 WZHU WZHU 8:34 TODAY 8:34 ARRIVE 	<div style="background-color: #0070C0; color: white; padding: 10px; text-align: center;"> <h2>DOMESTIC DEPARTURES</h2>  <hr/>  <h2>INTERNATIONAL ARRIVALS</h2> </div>	 MU 131 KMG A1 MURKIN 8:10 TODAY 7:58 ARRIVE 	 EP 881 PTGAL KVAH SPKSA 8:28 TODAY 8:00 ARRIVE 	 VA 100 PTGAL KVAH SPKSA 8:30 TODAY 8:01 ARRIVE 	 WZ 124 PTGAL KVAH SPKSA 8:30 TODAY 8:04 ARRIVE 	 MU 733 WZHU WZHU 8:34 TODAY 8:34 ARRIVE 
--	---	---	---	--	---	---	--	--	--	---







■ LCD - Single Landscape



■ LCD - Dual Portrait

Panel	Landscape	Display Size	42"	42" Dual	55"	55" Dual	65"	65" Dual
		Display Area (mm)	943x531	1886x531	1210x680	2420x680	1428x803	2856x803
	Resolution (px)	1920x1080 (each panel)			3840x2160 (each panel)			
	Portrait	Display Area (mm)	531x943	1062x943	680x1210	1360x1210	803x1428	1606x1428
		Resolution (px)	1080x1920 (each panel)			2160x3840 (each panel)		
	Frame	Powder Coated Steel Frame / Heat Treated Glass / Custom Colours and Finishes Available						
	Brightness (nits)	700-1000						
	Colour	1.06 Billion				1.073 Billion		
	Viewing Angle	178°						
Contrast Ratio	4000:1							
AV Inputs	Video	HDMI, USB						
Inputs	Power Consumption (W)	≤ 800			≤ 1000			
	Input Voltage	AC110~240V (50Hz~60Hz)						
Mechanical	Unit Size (LxWxH)	1020x610x350	2005x610x350	1280x750x350	2500x750x350	1500x875x350	2985x875x350	
	Operating Temperature:	-20°~ +60°						
Environmental	Operating Humidity:	10% - 80%						
	Storage Humidity:	5% - 90%						
	Enclosure Protection	IP30						
Internal Media Player	Operating System	Customisable						
Accessories	Included	AC Power Cable, Remote Control						
	Optional	Touch Screen Upgrade, Network Upgrade, Camera, Speakers, Dynamic Cooling System, Automatic Brightness Sensor						

# LCD WALL MOUNT DISPLAYS







**LCD - Single Portrait**

## MAIN FEATURES

- ▶ Superior brightness up to 3,000 nits
- ▶ 4K resolution
- ▶ 9:16 (portrait), 16:9 (landscape) ratio
- ▶ 24/7 rated
- ▶ Built for outdoors
- ▶ Waterproof and rustproof

## CUSTOMISABLE FEATURES

- ▶ Touch Screen upgrade
- ▶ In Built Camera
- ▶ Automatic brightness sensors

## SIZES AVAILABLE

- ▶ 42", 43", 49", 55", 65", 75", 86"

	Display Size	42"	55"	65"	75"
<b>Panel</b>	Resolution (px)	1080x1920 (each panel)	2160x3840 (portrait), 3840x2160 (landscape)		
	Frame	Powder Coated Steel Frame / Heat Treated Glass / Custom Colours and Finishes Available			
	Display Area (mm)	531x943	680x1210	803x1428	900x1600
	Brightness (nits)	700-3000			
	Colour	1.06 Billion	1.073 Billion		
	Viewing Angle	178°			
	Contrast Ratio	4000:1			
	<b>AV Inputs</b>	Video	2x HDMI, Customisable to suit the client		
<b>Inputs</b>	Power Consumption (W)	≤ 800	≤ 1000		
	Input Voltage	AC110~240V (50Hz~60Hz)			
<b>Mechanical</b>	Unit Size (LxWxH)	610x1020x200	750x1280x200	875x1500x200	980x1700x220
<b>Environmental</b>	Operating Temperature:	-20°~ +60°			
	Operating Humidity:	10% - 80%			
	Storage Humidity:	5% - 90%			
	Enclosure Protection	IP30 / IP65			
<b>Internal Media Player</b>	Operating System	Customisable			
<b>Accessories</b>	Included	AC Power Cable, Remote Control			
	Optional	Touch Screen Upgrade, Network Upgrade, In-built Camera, Speakers, Dynamic Cooling System, Automatic Brightness Sensor			

# LCD BATTERY POWERED KIOSKS

Single Sided







	Display Size	32"	42"	55"
<b>Panel</b>	Resolution (px)	1080x1920		
	Frame	Powder Coated Steel Frame / Heat Treated Glass / Custom Colours and Finishes Available		
	Display Area (mm)	500 x 643	531 x 943	680 x 1210
	Aspect Ratio	9:16		
	Brightness (nits)	300cd / m <sup>2</sup>		
	Colour	1.06 Billion	1.073 Billion	
	Viewing Angle	178°		
	Contrast Ratio	5000:1		
	<b>AV Inputs</b>	Video	HDMI, USB	
<b>Inputs</b>	Power Consumption (W)	≤ 800		
	Input Voltage	AC110~240V (50Hz~60Hz)		
<b>Mechanical</b>	Unit Size (LxWxH)	570x1500x120	605x1600x120	755x1850x120
	Net Weight (kg)	65	75	85
<b>Environmental</b>	Operating Temperature:	0°~ +40°		
	Operating Humidity:	10% - 80%		
	Storage Humidity:	10% - 90%		
<b>Internal Media Player</b>	Operating System	Customisable		
<b>Accessories</b>	Included	AC Power Cable, Remote Control		
	Optional	Touch Screen Upgrade, Network Upgrade, Camera, Speakers, Dynamic Cooling System, Automatic Brightness Sensor		



LCD

PORTABLE DIGITAL A BOARD

43 Inch Outdoor Battery Powered







<b>Panel</b>	Display Size	43"
	Resolution (px)	1080x1920
	Frame	Powder Coated Steel Frame / Heat Treated Glass / Custom Colours and Finishes Available
	Display Area (mm)	940.896 x 529.254
	Aspect Ratio	9:16
	Brightness (nits)	400-1500 cd / m <sup>2</sup>
	Colour	16.7 Million
	Viewing Angle	178°
	Contrast Ratio	4000:1
<b>AV Inputs</b>	Video	HDMI, USB
<b>Battery</b>	Battery	Polymer lithium
	Capacity	4300mAh
	Voltage / Power	25.2V / 28W-110W
	Charging	7-8 Hours
	Duration	Indoor 30 Hours (400nits-450 nits) / Outdoor 8 Hours ( 1000nits-1500 nits)
<b>Mechanical</b>	Unit Size (LxWxH)	1235.1×1595×151.3
	Net Weight (kg)	41.67kg
<b>Environmental</b>	Operating Temperature:	20°~ 50°
	Operating Humidity:	10% - 80%
	Storage Humidity:	5% - 95%
<b>System</b>	Media	Video MPG, AVI, MP4, RM, RMVB, TS, Audio MP3, WMA, Image( JPG, GIF, BMP,PNG)
	Output	1080x1920
	CPU / RAM / ROM	RK3288 / 2GB / 16GB
	USB	USB2.0 HOST (x2)
	Wi-Fi	802.1 1b/g/n
	System	Android 7.1 (Android 11 is optional)
	Soaker	8Ω 5W x2
<b>Accessories</b>	Included	Remote, Manual, Power adapter

# LCD

## DIGITAL WINDOW DISPLAY

Single-Sided





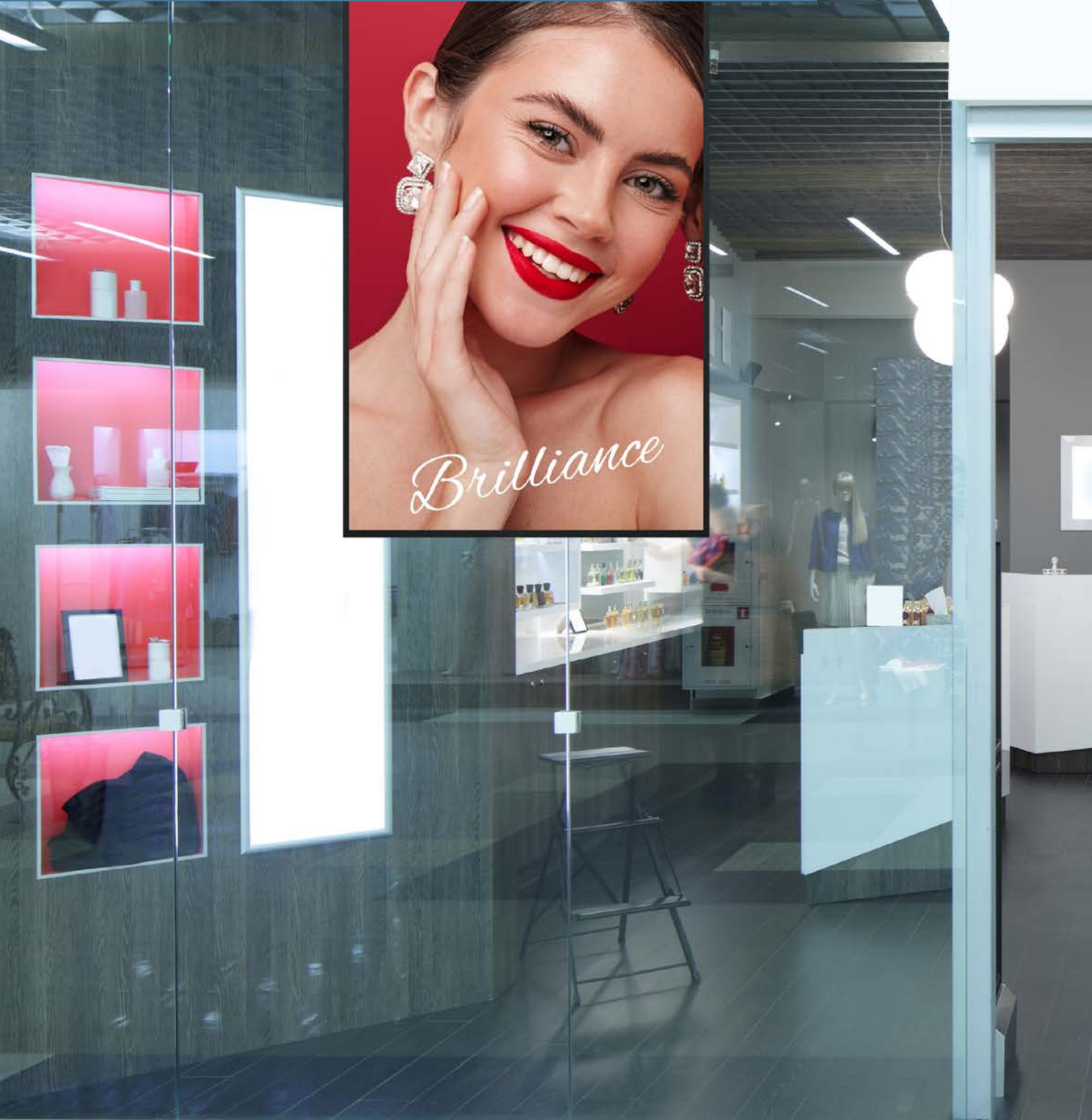


Panel Specifications						
Panel Size	32"	43"	49"	55"	65"	75"
Display Area (mm)	698.4×392.8	941.18×529.42	1073.78×604	1209.6×680.4	1428.5×803.5	1649.7×927.9
Contrast ratio	4000:1					
Resolution	Full HD 1920*1080			UHD 3840*2160		
Brightness	2500 nits High TNi 3000 nits optional					
Colour	16.7M					
Viewing Angle	178°					
LED Backlight	Yes					
Response Time	8ms					
Life	50000(hrs)					
operation time	7*24Hrs					
Video	HDMI, USB					
Display mode	Vertical/Horizontal					
Installation method	Wall mount/ Ceiling mount/ Floor standing					
Operating System	Android					
CPU	Android RK3288 / RK3399					
Memory	2GB / 4GB					
Nand flash	16GB / 32GB					
Storage port	USB, SD card					
OS	Android 7.1, Android 11					
WiFi	Yes, inbuild WiFi802.11b/g/n); 4G/GPS/Bluetooth(optional)					
Optional	Windows (i3, i5, i7)					

LCD

DIGITAL WINDOW DISPLAY

Double-Sided







Panel Specifications		
Panel Size	49"	55"
Display Area (mm)	1073.78×604	1210×680
Contrast ratio	4000:1	
Resolution	1920*1080	
Brightness	2500nits+700nits(3000nits+700nits option)	
Viewing Angle	178°	
LED Backlight	Yes	
Response Time	8ms	
Life	50000(hrs)	
operation time	7*24Hrs	
Video	HDMI, USB	
Display mode	Vertical	
Installation method	Ceiling Method	
Operating System	Android	
CPU	Android RK3288 / RK3399	
Memory	2GB / 4GB	
Nand flash	16GB / 32GB	
Storage port	USB, SD card	
OS	Android 7.1, Android 11	
WiFi	Yes, inbuild WiFi802.11b/g/n); 4G/GPS/Bluetooth(optional)	
Optional	Windows (i3, i5, i7)	

# LCD TOUCH SCREEN KIOSK





## SMART TOUCH SCREEN KIOSK

- ▶ Panel Size :32" - 86"
- ▶ Touch: IR touch /Capacitive touch
- ▶ Brightness: 450nits
- ▶ Resolution : 2160x3840
- ▶ Viewing angle: 178 °
- ▶ Contrast ratio : 4000:1
- ▶ Backlight life : 5000hours
- ▶ Color :16.7M
- ▶ Input Voltage: 100V-240V, 50/60HZ

### Smart Multifunctional Touch Kiosk

Using a professional industrial LCD screen, the Touch Kiosk integrates computer, Internet, audio, multimedia technology and industrial plastic arts. In general, the video image is clearer, more natural and delicate and the visual impact is much stronger.



### Sleek, Professional Design

Floor standing kiosks are gradually being used in all aspects of people's lives, study and work. The standing touch screen has been widely used due to its high cost performance, customer design, and strong environmental adaptability.



### Floor Standing LCD Touch Totem

The Touch Totem supports 24/7 functionality. The life expectancy can reach more than 50000 hours. Making this a particularly excellent product in terms of customer assistance, with uninterrupted service. The touch screen can also be conveniently placed at any location.



**LCD**

**OUTDOOR DIGITAL SIGNAGE POLE**

Bonded YXD43S-LP IP67 Double sided

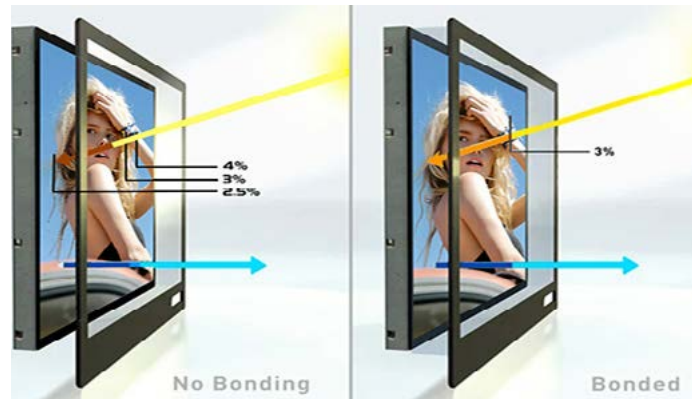


# OUTDOOR DIGITAL SIGNAGE POLE

- ▶ High TNi panel, temperature under 110°C
- ▶ Optical bonded technology
- ▶ Brightness: 3000nits
- ▶ 1920X1080 Full HD Resolution, 7x24 Industrial Level working time
- ▶ IP65 waterproof structure / IK10 vandal-proof protection level
- ▶ Sizes available, 43", 49" and 55"

## Optical bonding screen

Optical bonding technology. Optical bonding makes screens more physically durable. Optical bonding physically prevents dust and liquid ingress from getting inbetween the glass and LCD module.



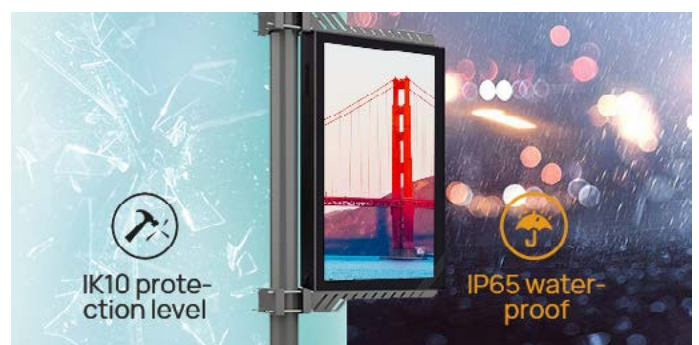
## High TNi panel

With high TNi panel, it supports high temperature functionality (up to 110°C). The built-in cooling and heating system reacts to the respective outside temperature and therefore keeps the inside temperature constant.



## Protection against vandalism

With IP65 waterproof structure, it prevents dust and rain ingress. With IK10 protection level, it can be totally vandal-proof.



# LCD

## FREE STANDING KIOSKS

Single & Double Sided / Indoor Outdoor







## MAIN FEATURES

- ▶ Superior brightness up to 3,000 nits
- ▶ 4K resolution
- ▶ Single or double sided
- ▶ 9:16 (portrait) aspect ratio
- ▶ 24/7 rated
- ▶ Built for outdoors
- ▶ Waterproof and rustproof

## CUSTOMISABLE FEATURES

- ▶ Touch Screen upgrade
- ▶ In Built Camera
- ▶ Automatic brightness sensors

## SIZES AVAILABLE

- ▶ 42", 43", 49", 55", 65", 86", 98"

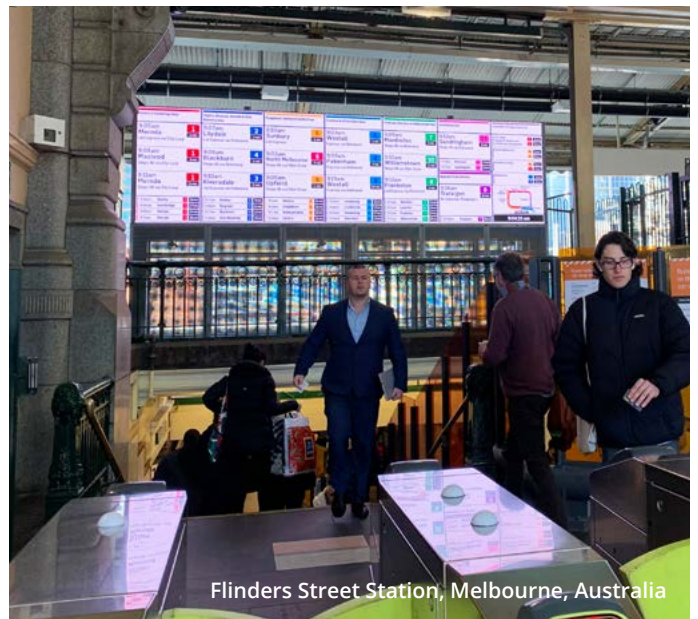
	Display Size	32"	42"	55"	65"	75"	85"	
<b>Panel</b>	Resolution (px)	1080x1920			2160x3840			
	Frame	Powder Coated Steel Frame / Heat Treated Glass / Custom Colours and Finishes Available						
	Display Area (mm)	643 x 500	943 x 531	1210x680	1428x803	1600x900	1860x1046	
	Aspect Ratio	9:16						
	Brightness (nits)	700-1000 (Indoor Model) / 3000 (Outdoor Model)						
	Colour	1.06 Billion			1.073 Billion			
	Viewing Angle	178°						
	Contrast Ratio	4000:1						
	<b>AV Inputs</b>	Video	HDMI, USB					
	<b>Inputs</b>	Power Consumption (W)	≤ 800			≤ 1000		
Input Voltage		AC110~240V (50Hz~60Hz)						
<b>Mechanical</b>	Unit Size (LxWxH)	600x180x1700	800x232x1800	904x272x1940	1000x390x1980	1246x256x2350	1248x380x2057	
	Net Weight (kg)	120	140	160	205	250	290	
<b>Environmental</b>	Operating Temperature:	-20° ~ +60°						
	Operating Humidity:	10% - 80%						
	Storage Humidity:	5% - 90%						
	Enclosure Protection	IP30 / IP65						
<b>Internal Media Player</b>	Operating System	Customisable						
<b>Accessories</b>	Included	AC Power Cable, Remote Control						
	Optional	Touch Screen Upgrade, Network Upgrade, Camera, Speakers, Dynamic Cooling System, Automatic Brightness Sensor						

# LED MEDIA WALL DISPLAYS / WAYFINDING SYSTEMS

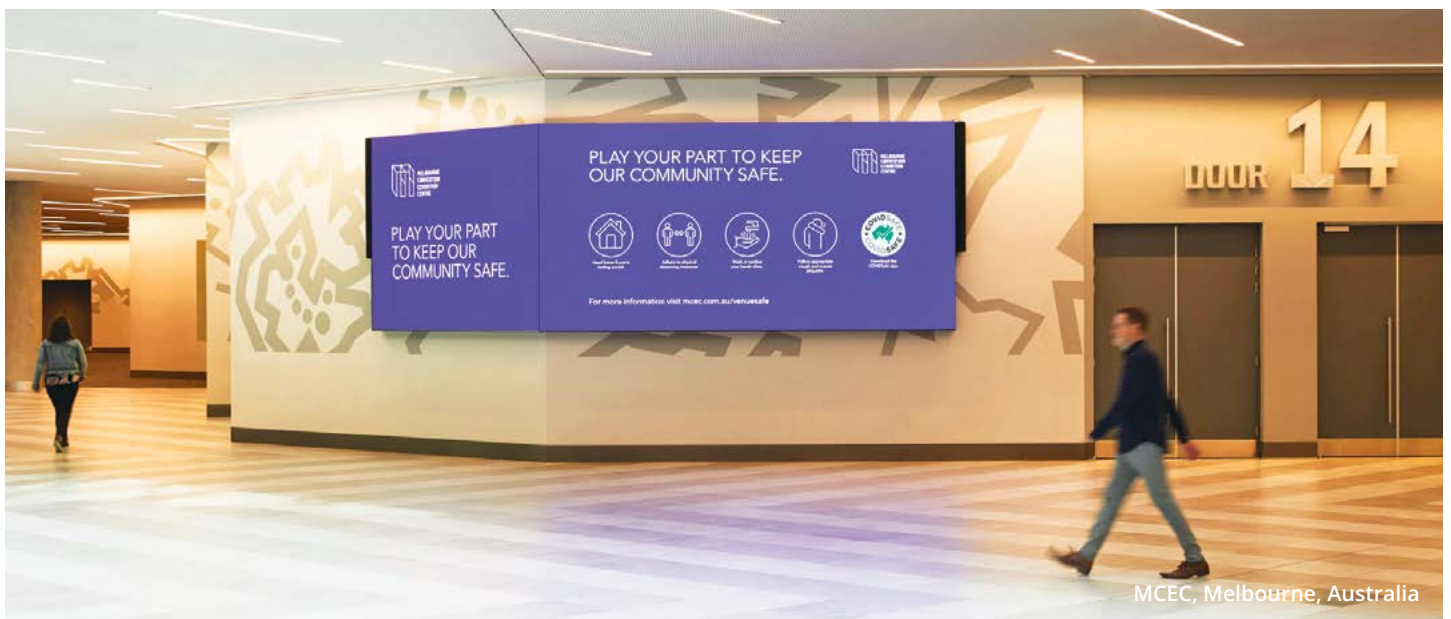
Size is no limitation with VuePix Infiled LED display solutions. We offer endless possibilities to perfectly suit your application and deliver a turnkey solution as a standout addition to any space.



ICC Sydney, Australia



Flinders Street Station, Melbourne, Australia



MCEC, Melbourne, Australia



UV  
**01** LOW  
If you burn easily, cover up

AIR TEMPERATURE  
**15°**  
max 19°

HUMIDITY  
**68%**

WIND  
**12 km/h**  
W

Randwick City Council Lifeguard Service starts at 7am.

RIPS BEWARE

SHORE BREAK BEWARE

BLUEROTTLES BEWARE

pedet

Australian Government

**BUILDING OUR FUTURE**

Randwick City Council





# LED CREATIVE & BESPOKE MEDIA DISPLAYS

Our experienced team of designers & engineers will work with you to specify, design & build your bespoke LED digital solution specifically for your unique application.

Our range of creative displays represents the next level in LED usability and interaction technology - from high transparency displays, designer displays of irregular shapes, soft flexible modules for creative installations with no limitations, to

interactive media displays with in-built motion sensors allowing responsive content to be shown.

From the iconic Australian Open digital logo through to the bespoke super-sized signage for Warner Bros. theme parks, our VuePix Infiled team have delivered some of the most innovative and unique custom built LED displays worldwide.









Contact our VuePix Infiled experts to discuss your next project

AUS: 1800 883 749 NZ: 09 218 6532 INT: +61 7 5509 4633 | [info@vuepix.com](mailto:info@vuepix.com) | [www.vuepix.com](http://www.vuepix.com)

REDEFINING TECHNOLOGY IN EVERY PIXEL